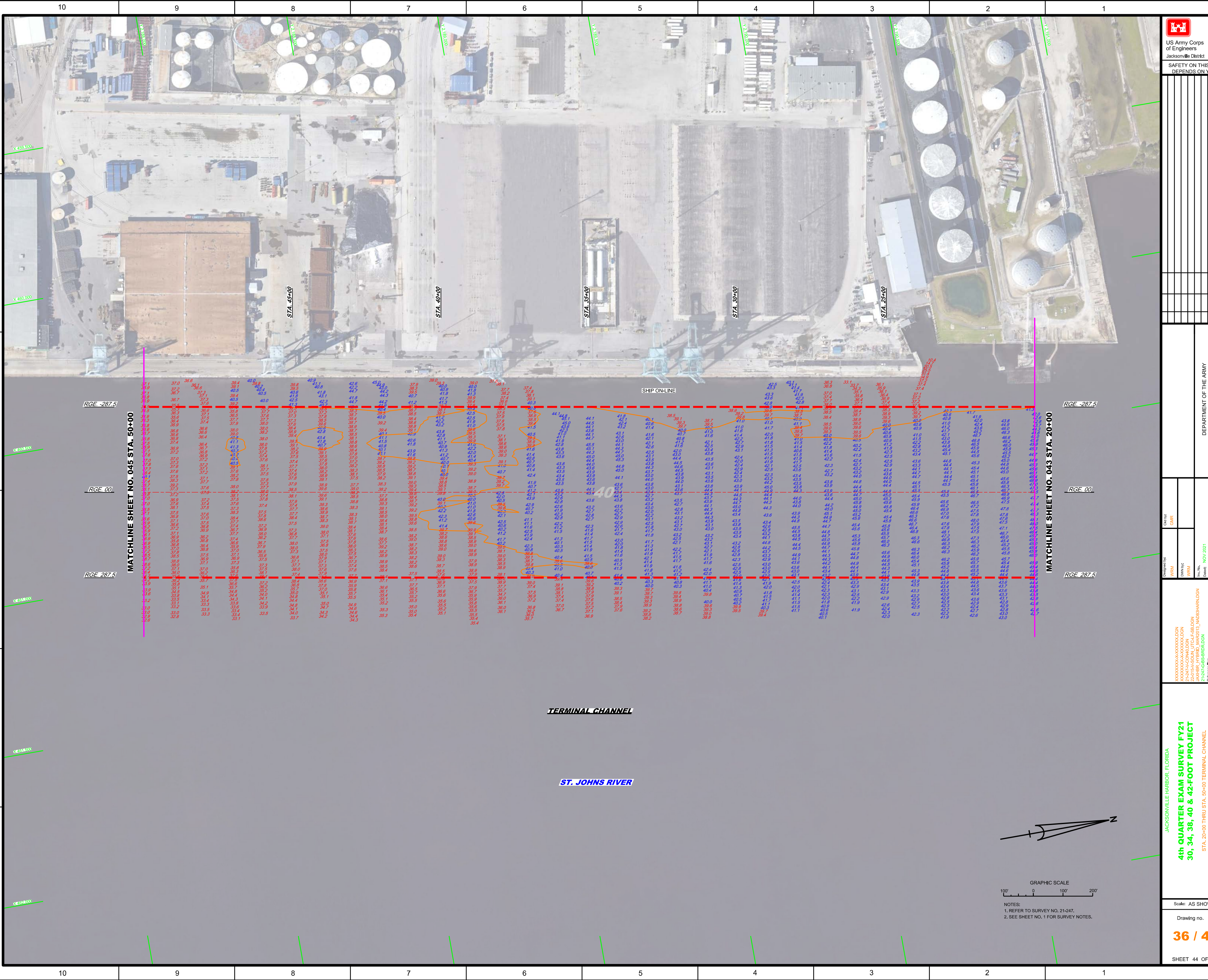


NOTES:

 1. REFER TO SURVEY NO. 21-247.

 2. SEE SHEET NO. 1 FOR SURVEY NOTES.



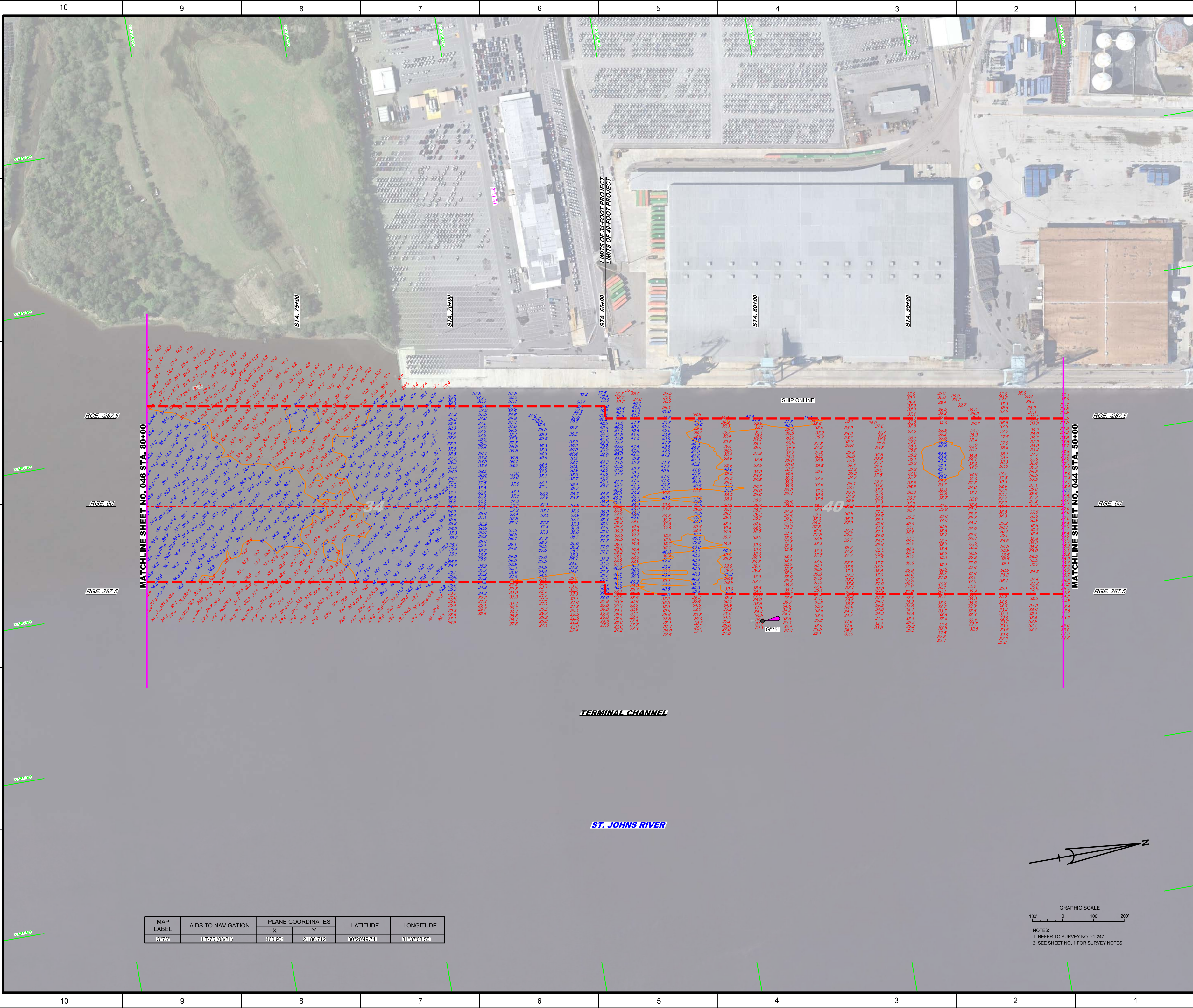
Designed by:	WRM
Checked by:	GHR
Drawn by:	WRM
File No.:	21-247-68-BB-BR10-DGN
Date:	NOV 2021

JACKSONVILLE HARBOR, FLORIDA
4th QUARTER EXAM SURVEY FY21
30, 34, 38, 40 & 42-FOOT PROJECT
STA. 20+00 THRU STA. 50+00 TERMINAL CHANNEL
PLAN

Scale: AS SHOWN
Drawing no. **36 / 43**
SHEET 44 OF 57



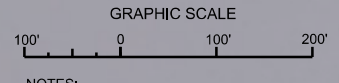
NOTES:
1. REFER TO SURVEY NO. 21-247.
2. SEE SHEET NO. 1 FOR SURVEY NOTES.



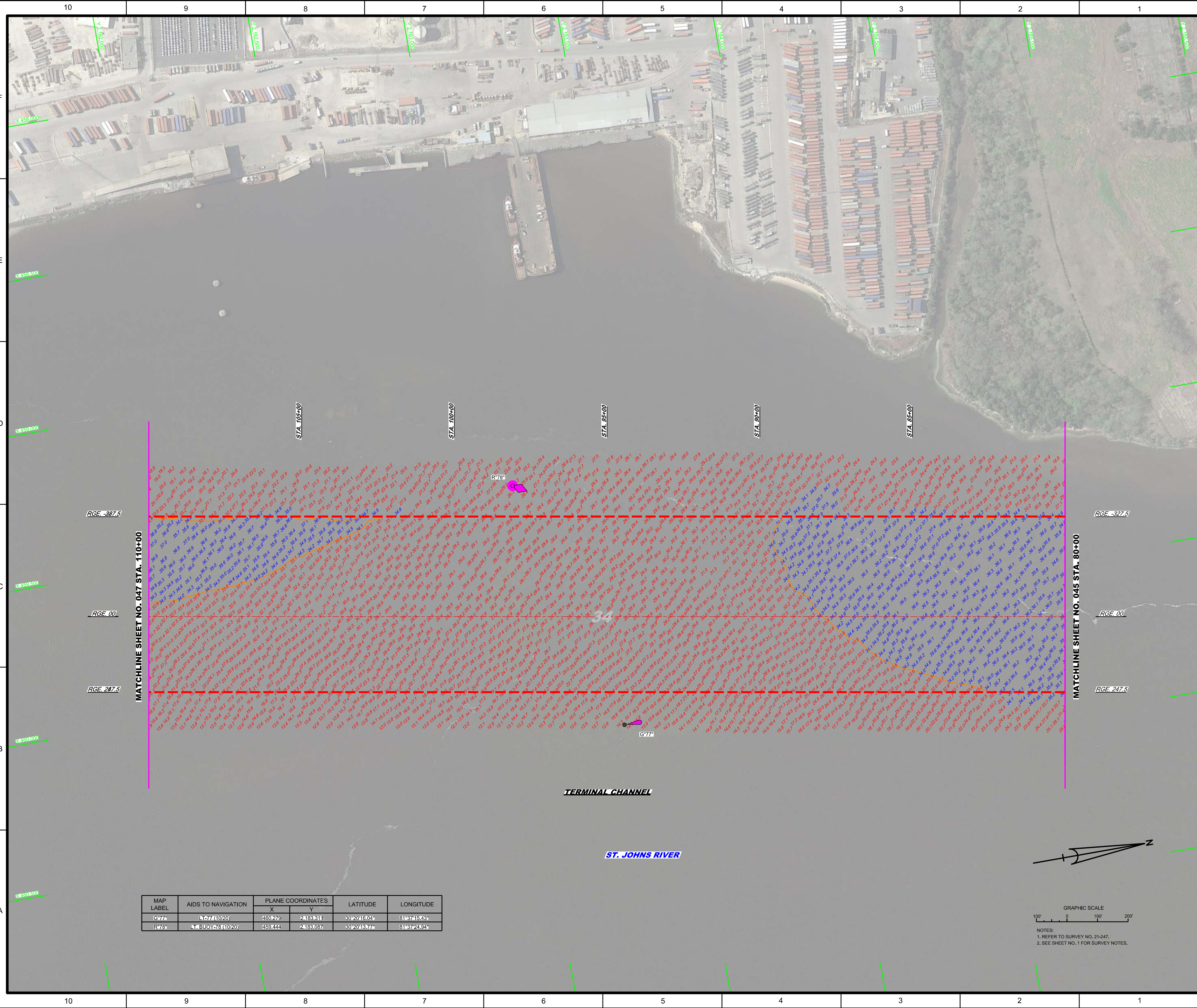
Designed by: WRM, DWM, WRM
Checked by: GHR, WRM
Date: NOV 2021

JACKSONVILLE HARBOR, FLORIDA
4th QUARTER EXAM SURVEY FY21
30, 34, 38, 40 & 42-FOOT PROJECT
STA. 50+00 THRU STA. 80+00 TERMINAL CHANNEL
PLAN

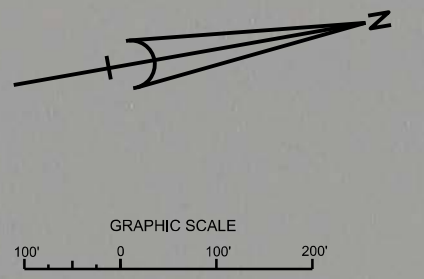
MAP LABEL	AIDS TO NAVIGATION	PLANE COORDINATES		LATITUDE	LONGITUDE
		X	Y		
G75	L75(08/21)	460,801	2,188,712	30°20'49.74"	81°37'08.55"




NOTES:
1. REFER TO SURVEY NO. 21-247.
2. SEE SHEET NO. 1 FOR SURVEY NOTES.



MAP LABEL	AIDS TO NAVIGATION	PLANE COORDINATES		LATITUDE	LONGITUDE
		X	Y		
G-77*	LT-77 (10/20)	460279	2183311	30°20'16.04"	81°37'15.43"
R-78*	LT BUOY 78 (10/20)	459444	2183087	30°20'13.77"	81°37'24.94"



NOTES:
 1. REFER TO SURVEY NO. 21-247.
 2. SEE SHEET NO. 1 FOR SURVEY NOTES.



US Army Corps of Engineers
 Jacksonville District
 SAFETY ON THIS JOB
 DEPENDS ON YOU

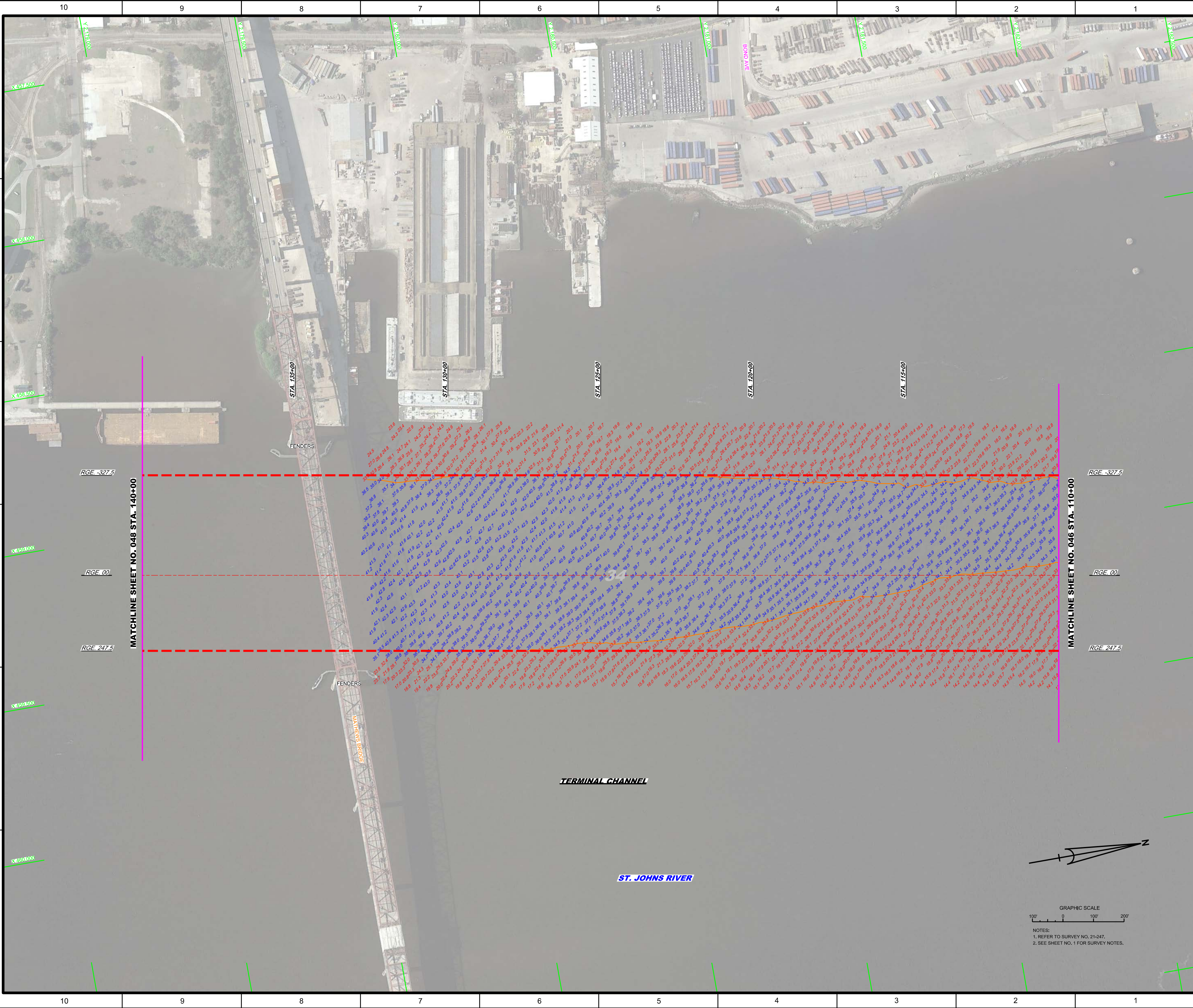
DEPARTMENT OF THE ARMY
 JACKSONVILLE DISTRICT, CORPS OF ENGINEERS
 JACKSONVILLE, FLORIDA

Designed by: WRM
 Checked by: GHR
 Drawn by: WRM
 Plot Date: NOV 2021

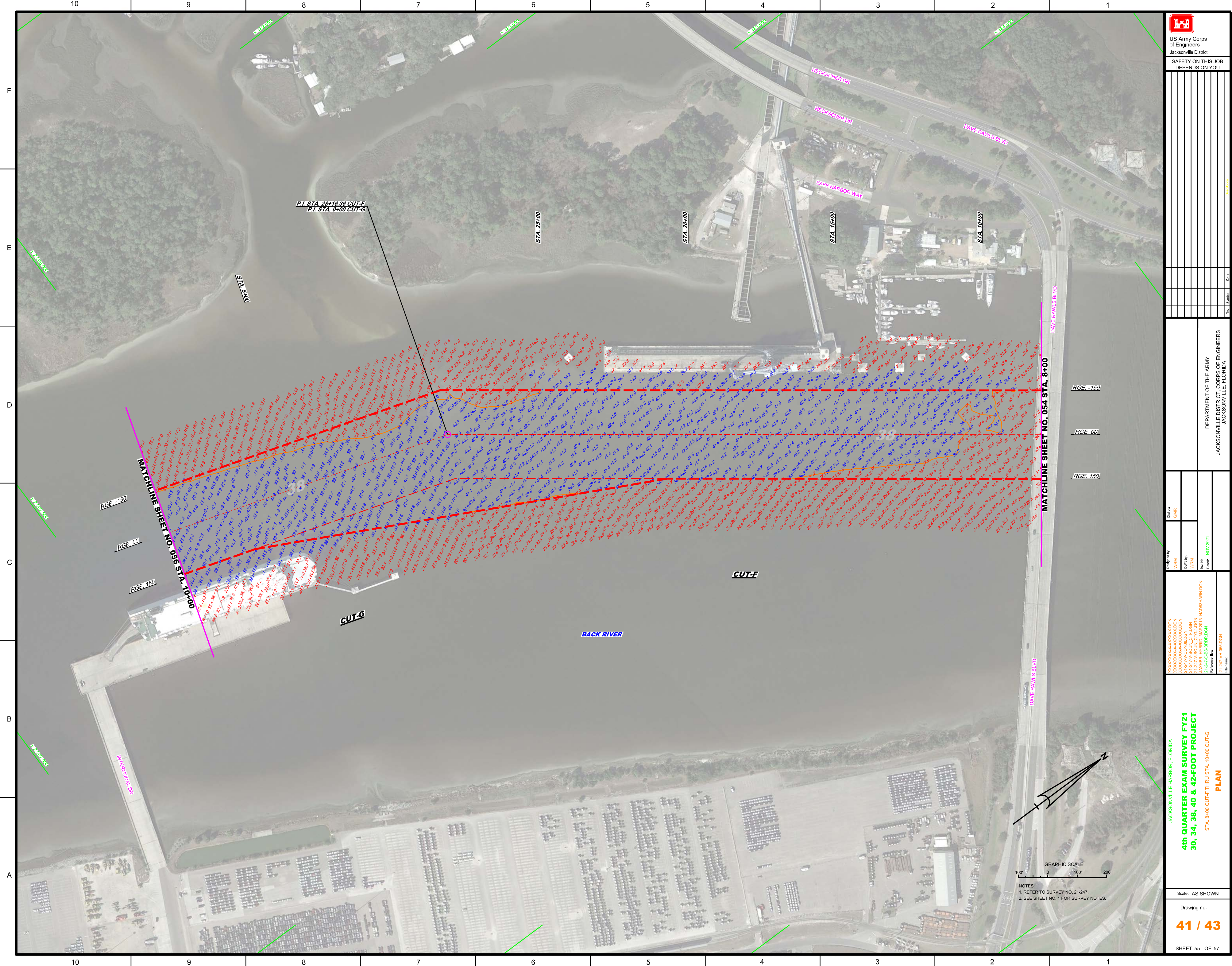
Reference files:
 21-247-GE-BRIDG.DWG
 21-247-GE-BRIDG.DWG
 21-247-GE-BRIDG.DWG

**4th QUARTER EXAM SURVEY FY21
 30, 34, 38, 40 & 42-FOOT PROJECT**
 STA. 80+00 THRU STA. 110+00 TERMINAL CHANNEL
PLAN

Scale: AS SHOWN
 Drawing no.
38 / 43
 SHEET 46 OF 57



 US Army Corps of Engineers Jacksonville District SAFETY ON THIS JOB DEPENDS ON YOU	
Drawn by: WRM Check by: GHR Date: NOV 2021	Department of the Army Jacksonville District, Corps of Engineers Jacksonville, Florida
Project: 4th QUARTER EXAM SURVEY FY21 30, 34, 38, 40 & 42-FOOT PROJECT STA. 110+00 THRU STA. 140+00 TERMINAL CHANNEL PLAN	Drawing no. 39 / 43 SHEET 47 OF 57



P.I. STA. 28+16.36 CUT-F
 P.I. STA. 0+00 CUT-G

STA. 25+00

STA. 20+00

STA. 15+00

STA. 10+00

MATCHLINE SHEET NO. 056 STA. 10+00

MATCHLINE SHEET NO. 054 STA. 8+00

CUT-F

CUT-G

BACK RIVER



NOTES:
 1. REFER TO SURVEY NO. 21-247.
 2. SEE SHEET NO. 1 FOR SURVEY NOTES.

US Army Corps of Engineers
 Jacksonville District

SAFETY ON THIS JOB DEPENDS ON YOU

DEPARTMENT OF THE ARMY
 JACKSONVILLE DISTRICT, CORPS OF ENGINEERS
 JACKSONVILLE, FLORIDA

Rev.	Symbol	Zone

Drawn by: WRM Checked by: WRM	Designated by: WRM Design Date: NOV 2021	Call by: GHR	JACKSONVILLE HARBOR, FLORIDA 4th QUARTER EXAM SURVEY FY21 30, 34, 38, 40 & 42-FOOT PROJECT STA. 8+00 CUT-F THRU STA. 10+00 CUT-G PLAN
Reference files: 21-247-FB-SB-SR-01.DGN 21-247-FB-SB-SR-02.DGN 21-247-FB-SB-SR-03.DGN 21-247-FB-SB-SR-04.DGN 21-247-FB-SB-SR-05.DGN 21-247-FB-SB-SR-06.DGN 21-247-FB-SB-SR-07.DGN 21-247-FB-SB-SR-08.DGN 21-247-FB-SB-SR-09.DGN 21-247-FB-SB-SR-10.DGN 21-247-FB-SB-SR-11.DGN 21-247-FB-SB-SR-12.DGN 21-247-FB-SB-SR-13.DGN 21-247-FB-SB-SR-14.DGN 21-247-FB-SB-SR-15.DGN 21-247-FB-SB-SR-16.DGN 21-247-FB-SB-SR-17.DGN 21-247-FB-SB-SR-18.DGN 21-247-FB-SB-SR-19.DGN 21-247-FB-SB-SR-20.DGN 21-247-FB-SB-SR-21.DGN 21-247-FB-SB-SR-22.DGN 21-247-FB-SB-SR-23.DGN 21-247-FB-SB-SR-24.DGN 21-247-FB-SB-SR-25.DGN 21-247-FB-SB-SR-26.DGN 21-247-FB-SB-SR-27.DGN 21-247-FB-SB-SR-28.DGN 21-247-FB-SB-SR-29.DGN 21-247-FB-SB-SR-30.DGN 21-247-FB-SB-SR-31.DGN 21-247-FB-SB-SR-32.DGN 21-247-FB-SB-SR-33.DGN 21-247-FB-SB-SR-34.DGN 21-247-FB-SB-SR-35.DGN 21-247-FB-SB-SR-36.DGN 21-247-FB-SB-SR-37.DGN 21-247-FB-SB-SR-38.DGN 21-247-FB-SB-SR-39.DGN 21-247-FB-SB-SR-40.DGN			
Scale: AS SHOWN Drawing no. 41 / 43			SHEET 55 OF 57

